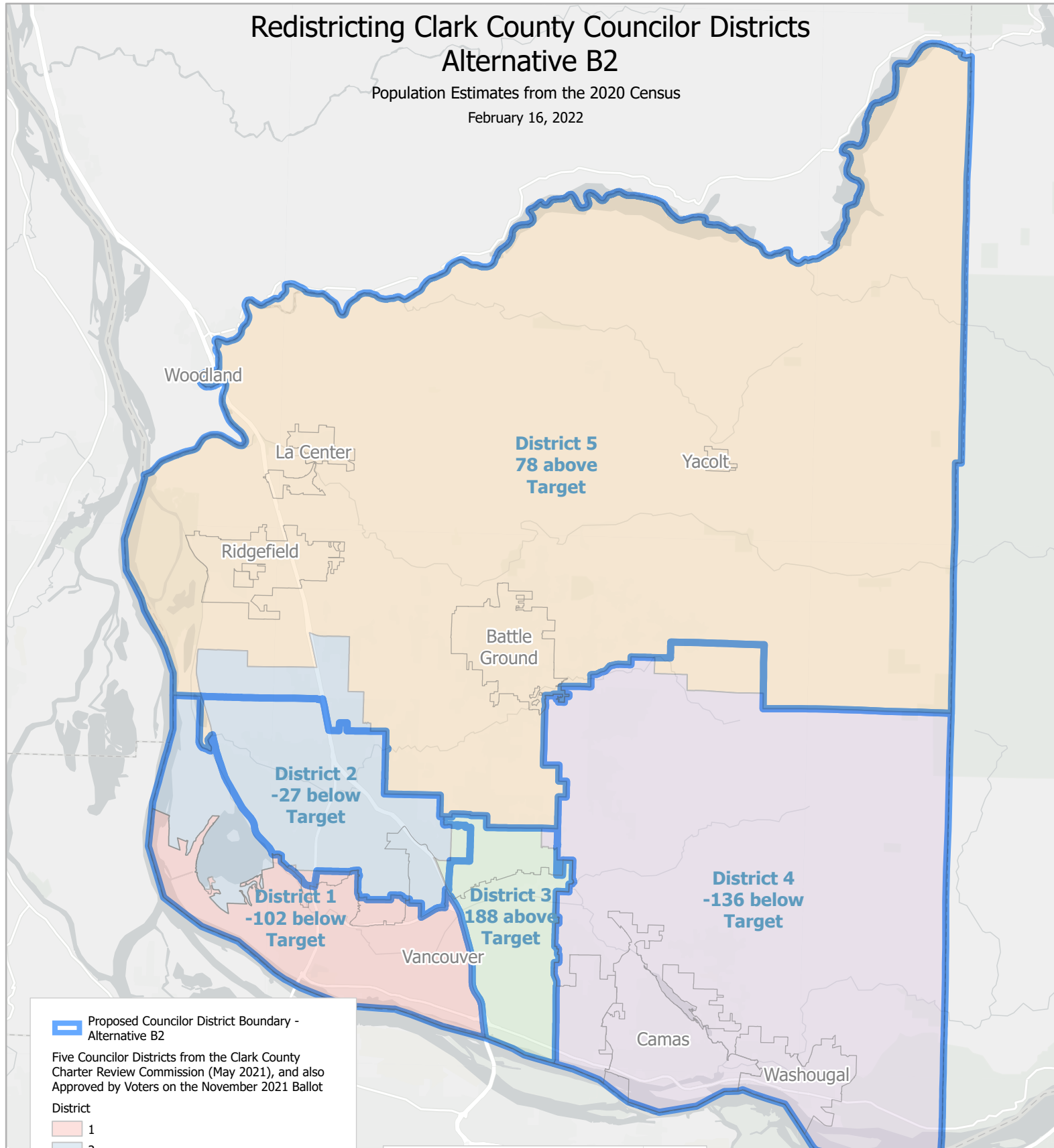


Redistricting Clark County Councilor Districts Alternative B2

Population Estimates from the 2020 Census
February 16, 2022



Proposed Councilor District Boundary - Alternative B2

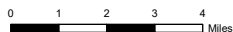
Five Councilor Districts from the Clark County Charter Review Commission (May 2021), and also Approved by Voters on the November 2021 Ballot

District

- 1
- 2
- 3
- 4
- 5



NOTE: Information shown on this map was collected from several sources. Clark County accepts no responsibility for any inaccuracies that may be present.



Geographic Compactness Scores - Alt B2

Polsby Popper Test - A higher score is more compact

Grofman Test - A lower score is more compact

District	Polsby Popper	Grofman
1	0.344	6.042
2	0.410	5.538
3	0.393	5.652
4	0.575	4.674
5	0.370	5.825
Total	2.093	27.730
Average	0.419	5.546

Alternative B2

District	Population	Target Population	Deviation from Target
1	100,560	100,662	-102
2	100,635	100,662	-27
3	100,850	100,662	188
4	100,526	100,662	-136
5	100,740	100,662	78
Total	503,311	503,311	531

Population estimate of districts 3 and 4 revised by 0.03% from earlier B2 maps.